

Scaled data based on original data using

LM-41-14 Approved Method for Photometric Testing Of Indoor Fluorescent Luminaires

Test Report Prepared for

Cooper Lighting Solutions

(formerly Eaton)

Brand: CORELITE

Report Number: ITL68834

Luminaire Tested: **I2-WL-2N5-1C-UNV-AC48-T1-4-SNL3**

Issue Date: 3/3/2020

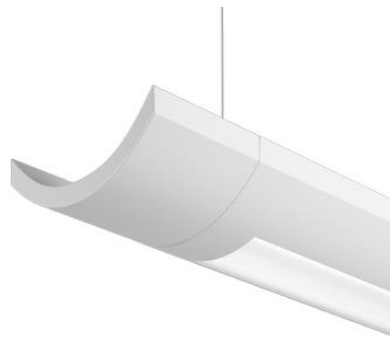
Test Information

Test Method: LM-41-14
Report Number: ITL68834
Test Lab: INDEPENDENT TESTING LABORATORIES, INC.
Issue Date: 3/3/2020
Manufacturer: COOPER LIGHTING SOLUTIONS (FORMERLY EATON)
Product Line: CORELITE
Catalog Number: I2-WL-2N5-1C-UNV-AC48-T1-4-SNL3
Description: FABRICATED WHITE PAINTED METAL HOUSING, FABRICATED WHITE PAINTED METAL BALLAST COVERS/REFLECTORS, EXTRUDED FROSTED LINEAR PRISMATIC PLASTIC LENS BELOW LAMP, LENS PRISMS UP AND PARALLEL WITH LAMPS, LENS FROSTED BOTH SIDES. ONE U-SHAPED 2-PIECE FORMED WHITE PAINTED METAL REFLECTOR ABOVE LAMPS WITH 36 ADJUSTABLE SLOTS ON TOP AND SIDES, ADJUSTABLE REFLECTOR SET TO "DL3" FOR THIS TEST.
Light Source: TWO 28-WATT T-5 SYLVANIA FP28/841/ECO LINEAR FLUORESCENTS.
Ballast/Driver: UNIVERSAL B228PUNV-C

Summary

Lumens per Lamp: 2600 (2 lamps)
Luminaire Lumens: 4045.1 lumens
Efficiency: 77.8%
Efficacy: 64.0 lumens/watt
Spacing Criteria (0/90/45): 1.2 / 1.22 / 1.32
Luminous Opening: Rectangular w/ Sides (W: 0.33' x L: 3.65' x H: 0.02')
CIE Type: Semi-Direct

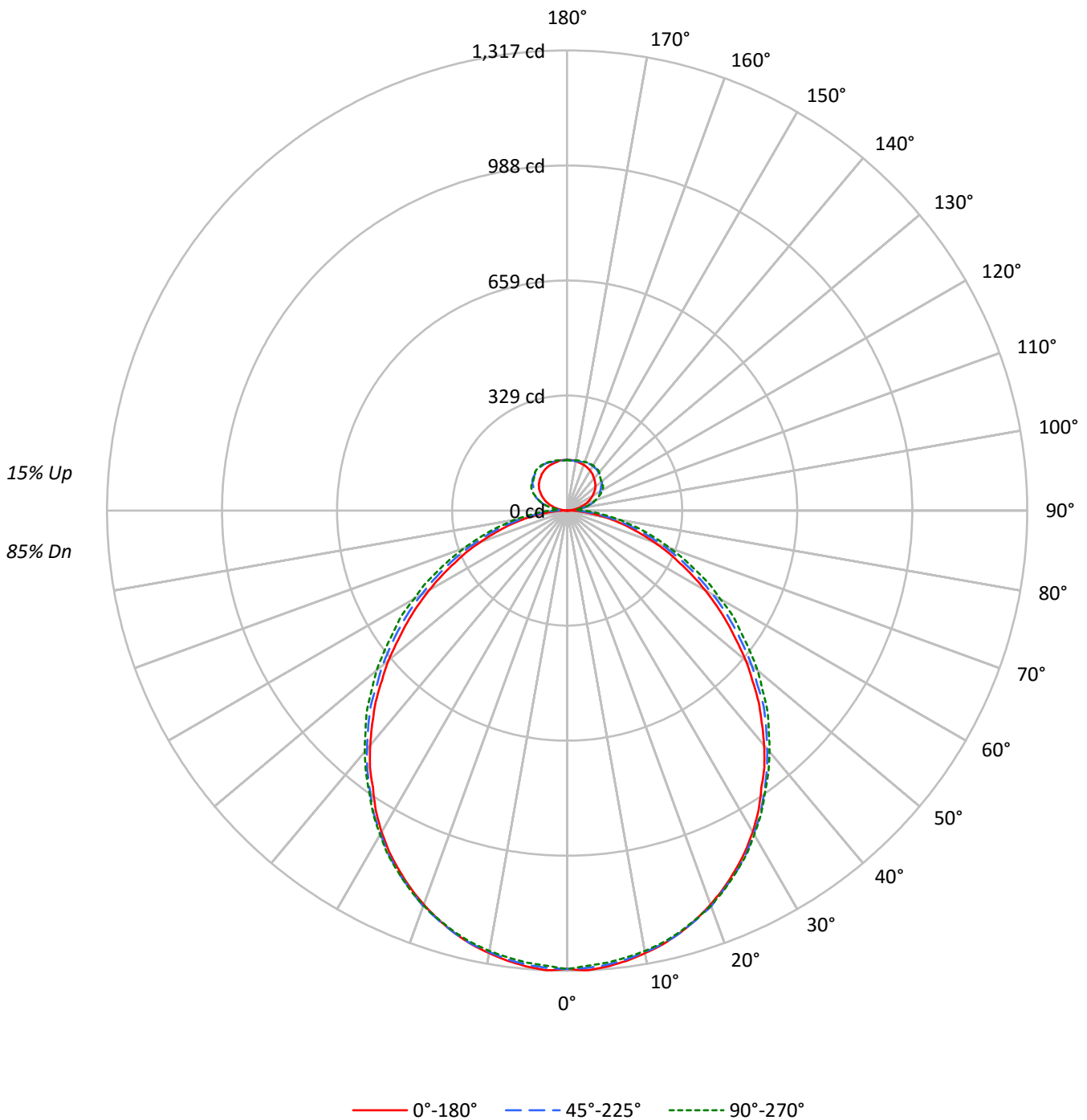
Input Watts (W): 63.2
Input Voltage (V): NR
Input Current (A_{in}): NR
Voltage Rise (V): NR
Power Factor: NR
Total Harmonic Distortion (THDi): NR
Frequency (hertz): 60
Stabilization Time: NR
Operation Time: NR
Ambient Temperature (°C): NR
Test Distance: 25 FT



TEST NUMBER: ITL68834

CATALOG NUMBER: I2-WL-2N5-1C-UNV-AC48-T1-4-SNL3

Luminous Intensity Polar Plot





TEST NUMBER: ITL68834

CATALOG NUMBER: I2-WL-2N5-1C-UNV-AC48-T1-4-SNL3

COEFFICIENT OF UTILIZATION - ZONAL CAVITY METHOD:

RF	20				20				20				20				20	
RC	80				70				50				30				10	0
RW	70	50	30	10	70	50	30	10	50	30	10	50	30	10	50	30	10	0
RCR																		
0	90	90	90	90	86	86	86	86	80	80	80	74	74	74	69	69	69	66
1	82	78	75	72	79	76	73	70	70	68	66	65	63	62	61	59	58	55
2	75	69	63	59	72	66	61	58	61	58	54	57	54	52	53	51	49	46
3	68	60	54	49	65	58	53	48	54	50	46	51	47	44	47	44	42	39
4	63	54	47	42	60	52	46	41	48	43	39	45	41	38	42	39	36	34
5	58	48	41	36	55	46	40	35	43	38	34	41	36	33	38	34	31	29
6	53	43	36	32	51	42	36	31	39	34	30	37	32	29	35	31	28	26
7	49	39	33	28	47	38	32	27	36	30	26	34	29	26	32	28	25	23
8	46	36	29	25	44	35	29	25	33	27	24	31	26	23	29	25	22	20
9	43	33	27	22	41	32	26	22	30	25	21	28	24	21	27	23	20	18
10	40	30	24	20	39	29	24	20	28	23	19	26	22	19	25	21	18	17

AVERAGE LUMINANCE (cd/sqm):

	0°	45°	90°
0°	11788	11788	11788
5°	11811	11732	11667
10°	11724	11630	11581
15°	11623	11523	11462
20°	11456	11370	11307
25°	11249	11141	11085
30°	10991	10850	10814
35°	10597	10512	10477
40°	10250	10138	10162
45°	9806	9756	9837
50°	9290	9241	9418
55°	8703	8708	8903
60°	8134	8144	8400
65°	7500	7549	7870
70°	6881	6921	7271
75°	6219	6320	6721
80°	5607	5525	6192
85°	4914	4866	6008



TEST NUMBER: ITL68834

CATALOG NUMBER: I2-WL-2N5-1C-UNV-AC48-T1-4-SNL3

ZONAL LUMENS:

Zone	Lumens	% Fixture	% Lamp
0°-10°	123.9	3.1	2.4
10°-20°	352.6	8.7	6.8
20°-30°	525.7	13.0	10.1
30°-40°	615.2	15.2	11.8
40°-50°	611.9	15.1	11.8
50°-60°	524.6	13.0	10.1
60°-70°	381.8	9.4	7.3
70°-80°	220.1	5.4	4.2
80°-90°	79.2	2.0	1.5
90°-100°	31.0	0.8	0.6
100°-110°	67.7	1.7	1.3
110°-120°	94.6	2.3	1.8
120°-130°	104.2	2.6	2.0
130°-140°	101.5	2.5	2.0
140°-150°	88.9	2.2	1.7
150°-160°	67.4	1.7	1.3
160°-170°	41.0	1.0	0.8
170°-180°	13.8	0.3	0.3
0°-30°	1002.2	24.8	19.3
0°-40°	1617.4	40.0	31.1
0°-60°	2753.9	68.1	53.0
0°-90°	3435.0	84.9	66.1
90°-120°	193.4	4.8	3.7
90°-150°	487.9	12.1	9.4
90°-180°	610.0	15.1	11.7
0°-180°	4045.1	100.0	77.8

CANDELA DISTRIBUTION:

	0°	22.5°	45°	67.5°	90°	Flux
0°	1312	1312	1312	1312	1312	
5°	1310	1310	1305	1300	1299	124
15°	1251	1254	1251	1248	1248	353
25°	1137	1141	1143	1142	1143	523
35°	969	984	983	992	987	608
45°	775	784	796	809	811	596
55°	559	569	585	605	607	500
65°	356	367	383	409	408	355
75°	182	191	207	226	228	195
85°	50	55	67	84	90	53
90°	0	13	28	42	44	4
95°	11	25	23	31	25	12
105°	41	57	69	78	67	43
115°	71	87	102	110	102	70
125°	95	109	118	127	125	85
135°	113	124	136	141	134	87
145°	127	136	145	150	147	79
155°	136	142	148	152	149	63
165°	141	141	145	147	147	40
175°	145	145	144	144	143	14
180°	145	145	145	145	145	



TEST NUMBER: ITL68834

CATALOG NUMBER: I2-WL-2N5-1C-UNV-AC48-T1-4-SNL3

CANDELA DISTRIBUTION (FULL):

	0°	22.5°	45°	67.5°	90°
0°	1312	1312	1312	1312	1312
2.5°	1317	1315	1310	1305	1304
5°	1310	1310	1305	1300	1299
7.5°	1300	1301	1296	1292	1290
10°	1286	1289	1283	1282	1280
12.5°	1271	1273	1270	1266	1266
15°	1251	1254	1251	1248	1248
17.5°	1227	1232	1228	1228	1226
20°	1200	1203	1205	1203	1203
22.5°	1170	1176	1173	1176	1175
25°	1137	1141	1143	1142	1143
27.5°	1102	1108	1108	1109	1111
30°	1062	1065	1068	1070	1071
32.5°	1019	1026	1030	1033	1032
35°	969	984	983	992	987
37.5°	927	931	939	945	946
40°	877	888	891	905	901
42.5°	825	832	843	853	854
45°	775	784	796	809	811
47.5°	719	731	739	761	758
50°	668	675	690	707	712
52.5°	610	624	636	659	659
55°	559	569	585	605	607
57.5°	508	517	535	557	563
60°	456	465	482	503	506
62.5°	406	415	432	454	461
65°	356	367	383	409	408
67.5°	312	319	336	358	360
70°	265	276	290	314	313
72.5°	222	231	247	266	269
75°	182	191	207	226	228
77.5°	146	155	165	186	186
80°	111	118	129	148	152
82.5°	76	85	95	114	115
85°	50	55	67	84	90
87.5°	24	29	46	61	67
90°	0	13	28	42	44
92.5°	5	17	23	29	31
95°	11	25	23	31	25
97.5°	17	32	34	41	30
100°	24	41	47	56	43
102.5°	32	50	60	68	57
105°	41	57	69	78	67
107.5°	49	64	79	87	78
110°	57	72	87	95	86



TEST NUMBER: ITL68834

CATALOG NUMBER: I2-WL-2N5-1C-UNV-AC48-T1-4-SNL3

CANDELA DISTRIBUTION (continued):

	0°	22.5°	45°	67.5°	90°
112.5°	64	80	95	102	94
115°	71	87	102	110	102
117.5°	77	93	105	117	110
120°	84	99	109	123	116
122.5°	89	104	114	126	122
125°	95	109	118	127	125
127.5°	101	114	125	130	126
130°	105	118	130	134	127
132.5°	110	121	134	137	131
135°	113	124	136	141	134
137.5°	117	127	138	146	138
140°	120	130	141	148	143
142.5°	123	133	143	149	146
145°	127	136	145	150	147
147.5°	129	138	146	151	148
150°	132	140	147	151	149
152.5°	134	141	148	152	149
155°	136	142	148	152	149
157.5°	138	142	148	151	149
160°	139	142	147	149	148
162.5°	140	141	146	148	147
165°	141	141	145	147	147
167.5°	142	142	144	146	147
170°	144	144	143	144	146
172.5°	145	145	144	143	144
175°	145	145	144	144	143
177.5°	145	145	145	144	144
180°	145	145	145	145	145

(END OF REPORT)